

Quick Start Guide



Installation and Wiring Video



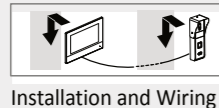
User Manual

1



Installation Requirements and Appearance

2 3



Installation and Wiring

4

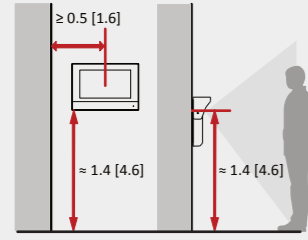


Configuration

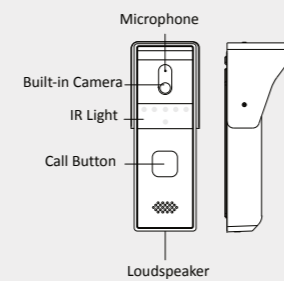
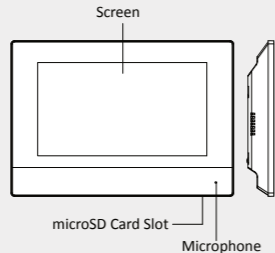
1 Installation Requirements and Appearance

Installation Requirements

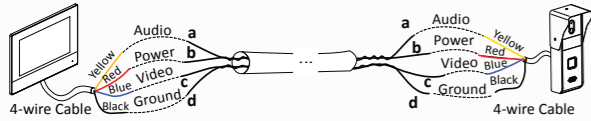
Unit: m [feet]



Appearance



- i** If the supplied 4-wire cable is not long enough, you can follow the steps below to prepare an extended 4-wire cable.
1. Select 4 wires in a cable.
 2. Twist the audio and power wires as a group as well as the video and ground wires.
 3. Extend and connect the wires as shown below.

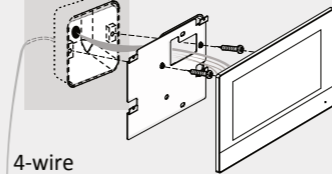


4-Wire Cable Specification				
AWG	24	20	18	16
Transmission Distance	0 to 10 [0 to 32.8]	10 to 30 [32.8 to 98.4]	30 to 50 [98.4 to 164]	50 to 100 [164 to 328]

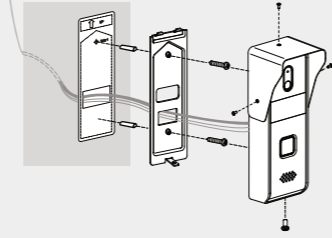
- About this Document**
- This Document includes instructions for using and managing the Product. Pictures, charts, images and all other information hereinafter are for description and explanation only.
 - The information contained in the Document is subject to change, without notice, due to firmware updates or other reasons. Please find the latest version of the Document at the Hikvision website (<https://www.hikvision.com>). Unless otherwise agreed, Hangzhou Hikvision Digital Technology Co., Ltd. or its affiliates (hereinafter referred to as "Hikvision") makes no warranties, express or implied.
 - Please use the Document with the guidance and assistance of professionals trained in supporting the Product.
- About this Product**
- This product can only enjoy the after-sales service support in the country or region where the purchase is made.
- Acknowledgment of Intellectual Property Rights**
- Hikvision owns the copyrights and/or patents related to the technology embodied in the Products described in this Document, which may include licenses obtained from third parties.
 - Any part of the Document, including text, pictures, graphics, etc., belongs to Hikvision. No part of this Document may be excerpted, copied, translated, or modified in whole or in part by any means without written permission.
 - HIKVISION and other Hikvision's trademarks and logos are the properties of Hikvision in various jurisdictions.
 - Other trademarks and logos mentioned are the properties of their respective owners.
- LEGAL DISCLAIMER**
- TO THE MAXIMUM EXTENT PERMITTED BY APPLICABLE LAW, THIS DOCUMENT AND THE PRODUCT DESCRIBED, WITH ITS HARDWARE, SOFTWARE AND FIRMWARE, ARE PROVIDED "AS IS" AND "WITH ALL FAULTS AND ERRORS". HIKVISION MAKES NO WARRANTIES, EXPRESS OR IMPLIED, INCLUDING WITHOUT LIMITATION, MERCHANTABILITY, SATISFACTORY QUALITY OR FITNESS FOR A PARTICULAR PURPOSE. THE USE OF THE PRODUCT BY YOU IS AT YOUR OWN RISK. IN NO EVENT WILL HIKVISION BE LIABLE TO YOU FOR ANY SPECIAL, CONSEQUENTIAL, INCIDENTAL OR INDIRECT DAMAGES, INCLUDING, AMONG OTHERS, DAMAGES FOR LOSS OF BUSINESS PROFITS, BUSINESS INTERRUPTION, OR LOSS OF DATA, CORRUPTION OF SYSTEMS, OR LOSS OF DOCUMENTATION, WHETHER BASED ON BREACH OF CONTRACT, TORT (INCLUDING NEGLIGENCE), PRODUCT LIABILITY, OR OTHERWISE, IN CONNECTION WITH THE USE OF THE PRODUCT, EVEN IF HIKVISION HAS BEEN ADVISED OF THE POSSIBILITY OF SUCH DAMAGES OR LOSS.
- YOU ACKNOWLEDGE THAT THE NATURE OF THE INTERNET PROVIDES FOR INHERENT SECURITY RISKS, AND HIKVISION SHALL NOT TAKE ANY RESPONSIBILITIES FOR ABNORMAL OPERATION, PRIVACY LEAKAGE OR OTHER DAMAGES RESULTING FROM CYBER-ATTACK, HACKER ATTACK, VIRUS INFECTION, OR OTHER INTERNET SECURITY RISKS; HOWEVER, HIKVISION WILL PROVIDE TIMELY TECHNICAL SUPPORT IF REQUIRED.
- YOU AGREE TO USE THIS PRODUCT IN COMPLIANCE WITH ALL APPLICABLE LAWS, AND YOU ARE SOLELY RESPONSIBLE FOR ENSURING THAT YOUR USE CONFORMS TO THE APPLICABLE LAW. ESPECIALLY, YOU ARE RESPONSIBLE, FOR USING THIS PRODUCT IN A MANNER THAT DOES NOT INFRINGE ON THE RIGHTS OF THIRD PARTIES, INCLUDING WITHOUT LIMITATION, RIGHTS OF PUBLICITY, INTELLECTUAL PROPERTY RIGHTS, OR DATA PROTECTION AND OTHER PRIVACY RIGHTS. YOU SHALL NOT USE THIS PRODUCT FOR ANY PROHIBITED END-USES, INCLUDING THE DEVELOPMENT OR PRODUCTION OF WEAPONS OF MASS DESTRUCTION, THE DEVELOPMENT OR PRODUCTION OF CHEMICAL OR BIOLOGICAL WEAPONS, ANY ACTIVITIES IN THE CONTEXT RELATED TO ANY NUCLEAR EXPLOSIVE OR UNSAFE NUCLEAR FUEL-CYCLE, OR IN SUPPORT OF HUMAN RIGHTS ABUSES.
- IN THE EVENT OF ANY CONFLICTS BETWEEN THIS DOCUMENT AND THE APPLICABLE LAW, THE LATTER PREVAILS.

2 Installation

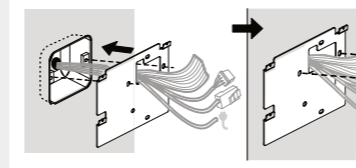
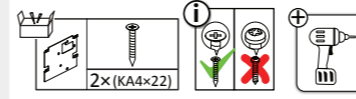
- i** You can install the indoor station with gang box or without gang box. Here takes gang box installation as an example.
- Both powering over Ethernet (PoE) and powering by direct current (DC) are supported. Here takes powering by DC as an example.



4-wire



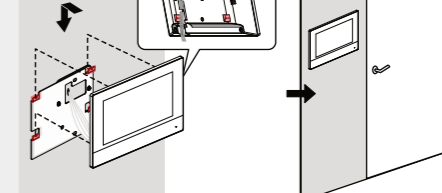
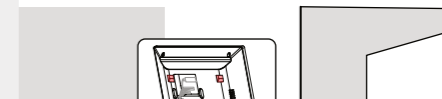
2.1 Install Indoor Station Mount the Plate



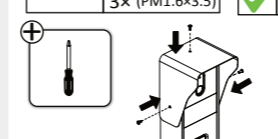
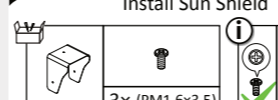
2.2 Install Indoor Station Insert SD Card



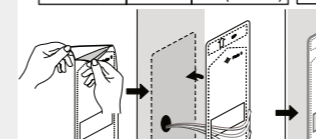
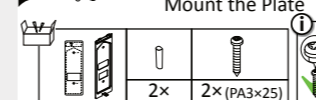
2.3 Install Indoor Station Secure Device and Mounting Plate



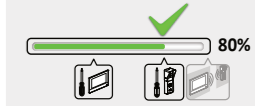
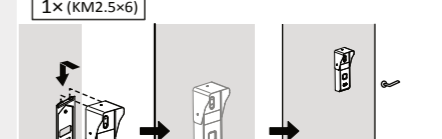
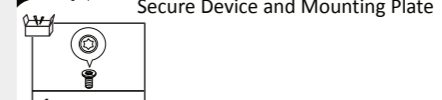
2.4 Install Door Station Install Sun Shield



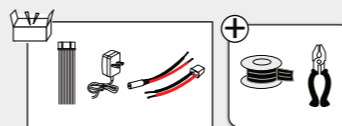
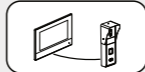
2.5 Install Door Station Mount the Plate



2.6 Install Door Station Secure Device and Mounting Plate



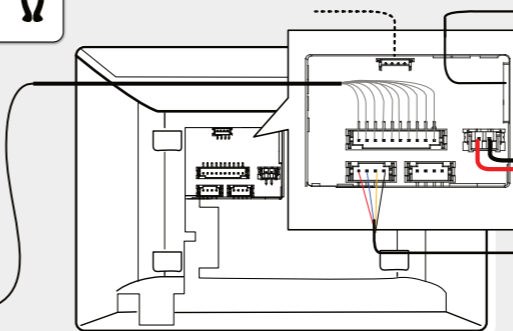
3 Wiring



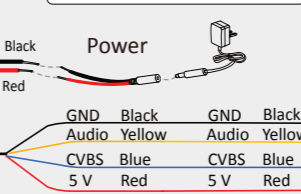
- i** Correct Side
- Reserved 485+
 - Reserved 485-
 - Relay Output 1 COM1
 - Relay Output 1 NO1
 - Relay Output 2 COM2
 - Relay Output 2 NO2
 - Alarm Input 2 AIN2
 - Alarm Input 1 AIN1
 - GND
 - GND

Alarm Input/Relay Output/RS-485 Interface

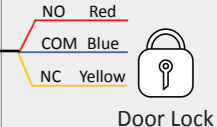
Debugging Only Network/PoE



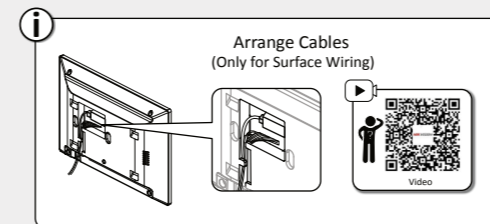
- i** If you use PoE, you can skip power cable wiring.



4-Wire Up to 2 Door Stations



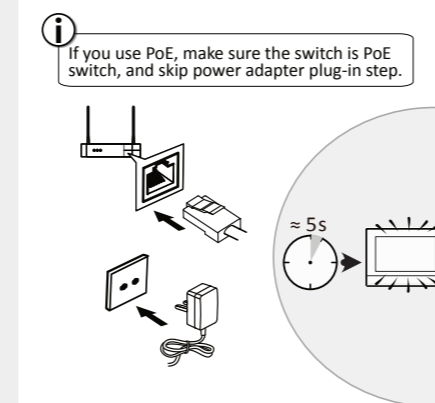
Door Lock



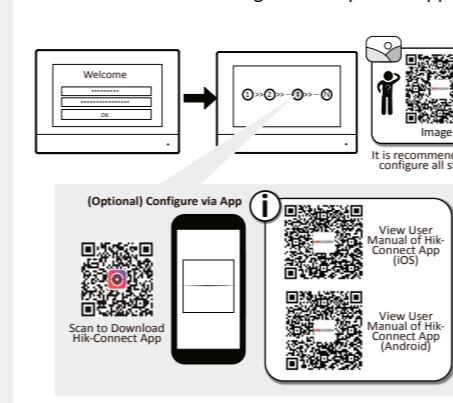
4 Configuration



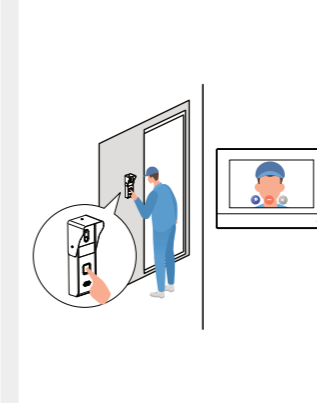
4.1 Configuration Connect to Network and Power On



4.2 Configuration Configure Locally or via App



4.3 Configuration Connection Test



4.4 Configuration Tear Off Protective Film

